

KARIBAN

REFERENCE : K6111

SIZES : XS_S_M_L_XL_XXL

COMPOSITION :

Main fabric : Polyamide 380T PA coating- 35 For Garment and packable bag 100%polyamide

Fabric 2 : Polyester 380T PA coating- 47 For Garment and packable bag 100% polyester

Main fabric : Polyamide 380T PA coating- 35 For inside garment and pockets 100%polyamide

Wad 1 : Padding Polyester fake down (micro broken) - 260/270
Inside body,sleeve and hood 100%polyester

WEIGHT :

Main fabric : 35 gsm

Fabric 2 : 47gsm

Main fabric : 35 gsm

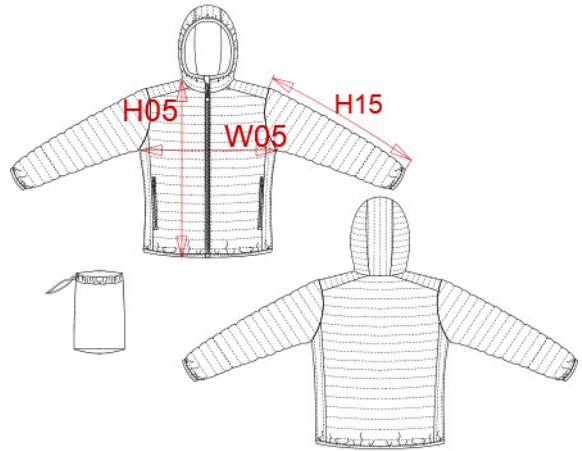
Wad 1 : 260/270 gsm

TECHNICAL DETAIL :

Coating for fake down proof

ARTICLE WEIGHT :

465 gr/pc



DESCRIPTION	COLORS	PANTONE SERIGRAPHIE
Français : Doudoune légère capuche femme	Black	Black
English : Ladies' lightweight hooded down jacket	Navy	433C
Nederlands : Lichte damesjas met capuchon	Light royal blue	653C
Deutsch : Leichte Damen-Steppjacke mit Kapuze	Red	200C
Español : Chaqueta acolchada ligera con capucha para mujer	Marl dark grey	Based on 446C
Italiano : Piumino donna leggero con cappuccio	Marl silver	Based on 877C
Português : Blusão de senhora acolchoado leve com capuz	White	White

MEASUREMENT							
Description	XS	S	M	L	XL	XXL	
H05 (L) Hauteur totale / Total height	60	62	64	66	68	70	
W05 1/2 largeur poitrine terminée/ 1/2 chest width after sewing	46	49	52	55	58	61	
H15 Longueur manche / Sleeve length	64	65	66	67	68	69	

CARE LABEL				

PACKING	
Box	15 pcs / box XS => L: 60cm W: 40cm H: 35cm GW: 6.2kg NW: 5.2kg S => L: 60cm W: 40cm H: 35cm GW: 6.4kg NW: 5.4 kg M => L: 60cm W: 40cm H: 35cm GW: 6.8kg NW: 5.8 kg L => L: 60cm W: 40cm H: 35cm GW: 6.9kg NW: 5.9kg XL => L: 60cm W: 40cm H: 40cm GW: 7.1kg NW: 6.1 kg XXL => L: 60cm W: 40cm H: 40cm GW: 7.3kg NW: 6.3kg