

KARIBAN

REFERENCE : K208

SIZES : XS_S_M_L_XL_XXL

COMPOSITION :

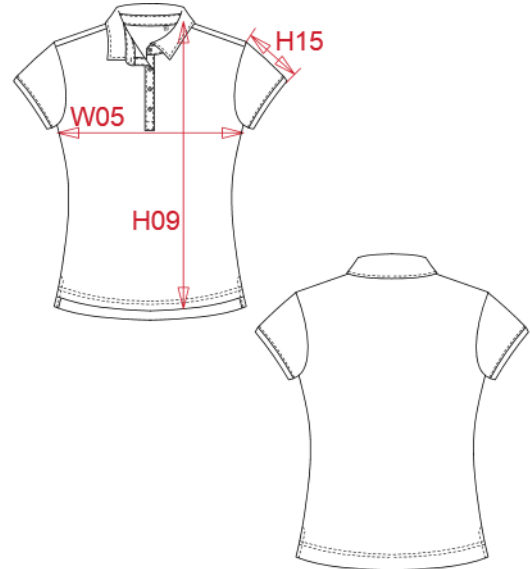
Main fabric : Polyester / Combed Cotton single jersey 65/35 -
160 65%polyester / 35%cotton

WEIGHT :

Main fabric : 160 gsm

ARTICLE WEIGHT :

148 gr/pc



DESCRIPTION
Français : Polo manches courtes "mélange" femme
English : Ladies' short sleeve melange polo shirt
Nederlands : Damespolo korte mouwen polykatoen
Deutsch : Damen-Kurzarm-Polo, Mischgewebe
Español : Polo de manga corta «melange» para mujer
Italiano : Polo donna maniche corte mélange
Português : Polo de senhora manga curta em poliéster/algodão

COLORS	PANTONE SERIGRAPHIE
Dark grey heather	Based on 446C
Blue heather	Based on 7545C
Tropical blue heather	Based on 7468C
Red heather	Based on 7523C
Green heather	Based on 556C
White	White

MEASUREMENT							
Description	XS	S	M	L	XL	XXL	
H09 (L) Hauteur totale devant / Front total height	59	61	63	65	67	69	
W05 (M) 1/2 largeur poitrine à 1.5cm de l'emmanchure / 1/2 chest width at 1.5cm below armhole	43	46	49	52	55	58	
H15I (L) Longueur manche avec bord côte / Sleeve length with rib	13,75	14,50	15,25	16	16,75	17,50	

CARE LABEL

PACKING	
Box	25 pcs / box XS-S => L:46cm W:36cm H:15cm GW:4.35kg NW:3.45kg M-L => L:50cm W:37cm H:15cm GW:4.90kg NW:3.90kg XL-XXL => L:52cm W:38cm H:15cm GW:5.35kg NW:4.25kg